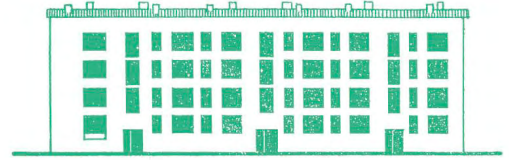


Call for Applications



» into the fields « – Residency Programme Libken *

Timetable:

Call for applications: 11 September – 10 October 2024

Announcement of selected artists: Mid–end of October

Period of the residency: 01.03.–30.04.25

Location: Denk- und Produktionsort Libken e.V., Ort Böckenberg 15-17, 17268 Gerswalde, Germany

Denk- und Produktionsort Libken (Uckermark/Germany) grants five residency scholarships* of two months to artists from Germany, the Czech Republic and Poland who live and work in the countryside or deal primarily with rural spaces in their artistic practice.

The aim of the residency programme is to engage in an exchange of different disciplines, cultural contexts and artistic practices, to deepen one's own work and to reflect on its specific conditions.

The two-month programme will take place in March and April 2025 in Libken, on the outskirts of the 80-inhabitant village of Böckenberg, around 100 km north-east of Berlin. With its infrastructure (indoor and outdoor workspaces, workshops for wood and ceramics, movement studio, library and communal kitchen), Libken can accommodate a wide range of activities. The programme is accompanied and framed by a kick-off weekend, as well as four group work meetings spread over the residency period, moderated inputs and studio visits. In addition to supporting the respective projects, the programme encourages participants to understand the international group as a resonance space for their own work and as a performative resource. In this way, we focus on practising forms of coexistence, cooperation and sharing/participation, which are indispensable in times of political shift to the right and economic uncertainty. The common working language will be English.



Funded by
the European Union



GOETHE
INSTITUT

Libken

*The residency programme is supported by Culture Moves Europe, the permanent mobility scheme funded by the Creative Europe programme of the European Union and implemented by the Goethe-Institut.

Who can apply?

- Artists residing in Germany, the Czech Republic and Poland who are based in rural areas or whose artistic practice is *primarily* concerned with rural areas
- Professionally working artists of all disciplines and interdisciplinary practices aged 18+

Who can not apply?

- Artists who have already received the Culture Moves Europe Mobility Grant or have received funding under the Individual Mobility Action in the same period / for the same project
- Group applications and applications by artist duos cannot be considered
- Artists who work *exclusively* in the audio-visual field

Unfortunately, our premises are not accessible for wheelchair users and people with limited mobility.

Libken supports a broad spectrum of artistic practices and interdisciplinary approaches. In this sense, we do not select according to discipline, but encourage experimentation with different media and methods.

What awaits you?

- The residency is subsidised at €25/day per artist (€1550 in total)
- Costs for travelling to and from Libken will be covered at a fixed rate of €350. Journeys of 600 km or more from the place of residence (registration address) to Libken are covered with an additional €350. Air travels are not covered. Scholarship holders must organise their own travel to and from Libken.
- Top-ups: People with disabilities can receive a daily allowance of up to €75*
People with children under the age of ten receive a one-off grant of €100.
- Accommodation in one of our flats/studio apartments
- Free use of the on-site infrastructure (indoor and outdoor workspaces, wood and ceramic workshops, movement studio, library, communal kitchen)
- Project support by a three-person team (kick-off weekend, group work meetings, moderated inputs, studio visits)
- PR (presentation of the scholarship holders and their projects on social media and on the Libken website)
- Practical information on local and regional infrastructures
- Use of guest bicycles

*The proof can be any official document proving that the participant has a disability that affects their ability to carry out the mobility project.

How do I submit my application?

- The application must be submitted in **English**
- Please submit your application in **one** PDF document (max. 10 MB)
 - Compact portfolio with previous works (max. 15 pages)
 - CV (contact details, relevant education, professional experience) and artist statement (max. 1-2 pages)
 - ID and document that proves the place of legal residence
 - Completed application form
 - Contains: description of artistic practice/project to be worked on during the residency (max. 1000 characters), motivation statement (max. 1000 characters), proposal for a practice to be shared with the other residents (max. 500 characters)
- Document title: name-firstname_Libken-intothefields-2025

Deadline: 10 October 2024 (24:00 CET)

→ Send to: call@libken.de

Incomplete applications cannot be considered. If you have any questions or technical problems, please send an email to call@libken.de.

Organisation: Johanna Ackva, Anna Bartholdy, Judith Milz

Website: www.libken.de

Programme: [Culture Moves Europe](#)

Instagram: Libken Denk- und Produktionsort ([@libken_](#))



Additional

General Information

The core of Denk- und Produktionsort Libken is a four-storey residential building with 24 apartments on the edge of the 80-inhabitant village of Böckenberg (Uckermark). Like many similar architectures, the building was doomed to demolition due to vacancy. Since 2014, it has been gradually renovated in various constellations and with the help of friends and supporters.

Today, Libken is a residency that offers space to people and their projects in areas such as art, culture, activism, movement and science. Both individuals and groups of up to around 40 people can rent apartments of various sizes and layouts in Libken, use the workspaces and grounds. Accessible to all guests are a public library and the spacious garden with a covered outdoor working area, as well as mobile seating and working facilities.

Alongside the running of the residency, we work with artists and cultural practitioners to put on programs ranging from workshops and exhibitions to film screenings, readings, symposia and festivals. Libken also grants room scholarships as and when possible. In our activities, cooperation within the local region and beyond is important to us.

We see Libken as a place of retreat and concentration, but also as a place for exchange, discourse and experimentation with different ways of working and living. Libken thrives on the impulses that both its operators as well as long-term and short-term collaborators and guests bring with them and is therefore a place in constant change.

Libken is run by a non-profit association. The residency is currently organized by a team of four people.

About us

We see Libken as an open place where people from diverse backgrounds and with different experiences come together and shape the character of the place. We engage in discourses around power, discrimination and inclusive ways of thinking and working. As a team that currently consists of white and predominantly non-disabled people, we endeavour to make Libken a place where LGBTQ+, BIPoC and people with disabilities enjoy being guests and can live and work well.

If you wish, you are welcome to provide any relevant information about yourself in terms of self-positioning in your application. If special arrangements are required so that you can work well with us, please communicate the to us. There is a field for that in the application form.

Access Info

Unfortunately, our premises are not barrier-free for wheelchair users and people with limited mobility. Libken is also unable to offer childcare. If you have any further questions about accessibility or staying in Libken with a child, please contact us by email: call@libken.de.

You can get to Libken by car, train or bus. You find connections on the website of Deutsche Bahn. Please note: There are only a few connections a day and some buses (RUF) must be booked in advance.

Libken itself is located on the edge of a tiny village. A lake and walking paths through fields and woods are within walking distance. The nearest shops, restaurants, doctors and pharmacies are several kilometres away and buses only run infrequently. Our guests can use our bikes free of charge and often bring their own bikes. Libken also has a few permanent residents who can offer rides to the nearest larger towns.

On our information boards you will find information about regional players (farm shops, cafés, cultural events).



